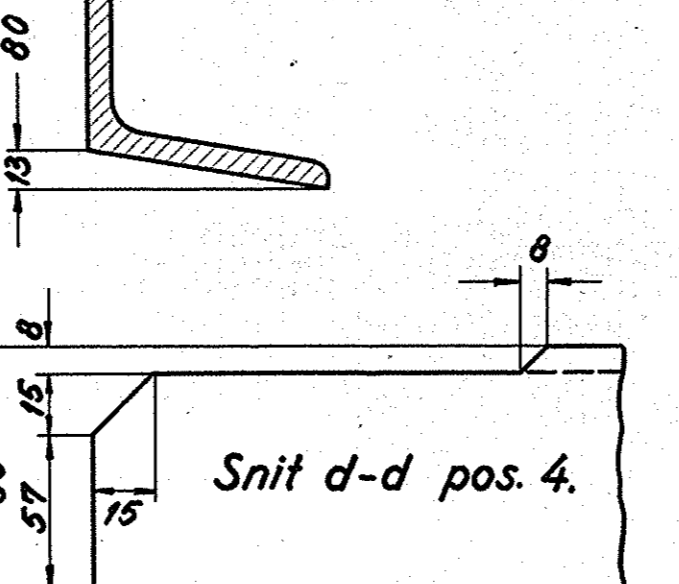


Angaaende placering se tegn. 305L-3.010.

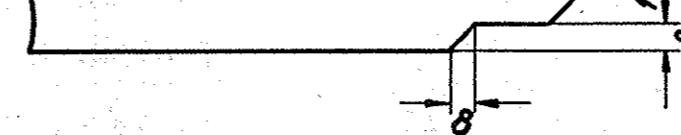
Stk.	Benævnelse	Pos.	Materiale	Model nr. eller materiale afprøvet	roe	hævedy
2	vinkeljern 120x120x11x12850	36	st. 37	vj. 120x120x11x12850	25.750	2.52
2	" 80x120x10x1430	35	"	vj. 80x120x10x1430	2.880	
2	" 80x120x10x15280	34	"	vj. 80x120x10x15280	30.620	560
2	" " x 1027	32	"	vj. 55x75x7x1027	1.240	
2	" " x 930	31	"	vj. 55x75x7x930	1.200	
2	" " x 594	30	"	vj. 55x75x7x594	1.200	
2	" " x 606	29	"	vj. 55x75x7x606	1.220	
2	" " x 622	28	"	vj. 55x75x7x622	1.260	101
2	" " x 653	27	"	vj. 55x75x7x653	1.200	
2	" " x 585	26	"	vj. 55x75x7x585	1.200	
2	" " x 599	25	"	vj. 55x75x7x599	1.240	
2	" " x 609	24	"	vj. 55x75x7x609	1.240	
2	" " x 610	23	"	vj. 55x75x7x610	1.240	
2	" " x 647	22	"	vj. 60x30x7x647	1.320	6.15
2	" " x 1725	21	"	vj. 80x80x10x1725	3.470	
2	" " x 2310	20	"	vj. 80x80x10x2310	4.640	7200
2	" " x 2275	19	"	vj. 80x80x10x2275	4.570	
2	" " x 2093	18	"	vj. 80x80x10x2093	3.750	
2	" " x 1865	17	"	vj. 80x80x10x1865	3.220	52.7
4	" " x 805	16	"	vj. 60x60x6x805	2.320	
4	" " x 570	15	"	vj. 60x60x6x570	2.320	320.3
2	" " x 2043	14	"	vj. 80x80x8x2043	6.135	
4	" " x 1524	13	"	vj. 80x80x8x1524	6.135	118.9
4	" " x 2532	12	"	vj. 80x80x8x2532	8.200	
2	" " x 525	11	"	vj. 40x80x6x525	1.555	
2	" " x 330	10	"	vj. 40x80x6x330	680	
2	" " x 390	9	"	vj. 40x80x6x390	800	
2	" " x 380	8	"	vj. 40x80x6x380	780	39.2
4	" " x 680	7	"	vj. 40x80x6x680	2.175	
2	" " x 200	6	"	vj. 40x80x6x200	420	
2	" " x 435	5	"	vj. 40x80x6x435	680	
4	" " x 1600	4	"	vj. 40x80x8x1600	880	45.
4	" " x 1639	3	"	vj. 40x80x8x1639	880	46.3
4	" " x 570	2	"	30x60x5x570	2280	7.7
8	vinkeljern 40x60x5x1020	1	st. 37	vj. 40x60x5x1020	8200	30.7

Udg. nr. 1557

Snit c-c pos. 13.



Snit d-d pos. 4.



Snit e-e pos. 4.

